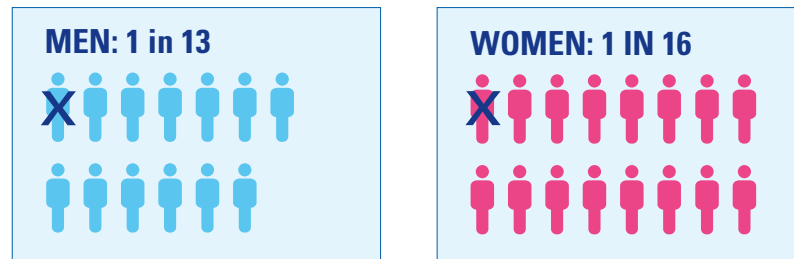


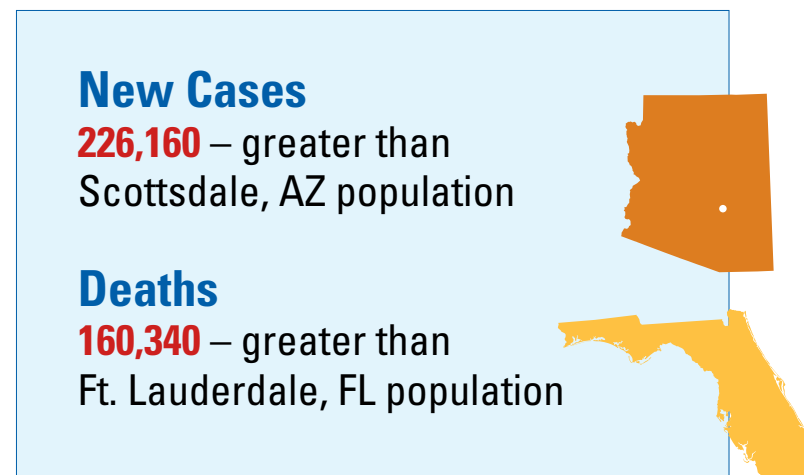
Lung Cancer

CAUSES MORE DEATHS THAN ANY OTHER CANCER

The Odds



Including both smokers & nonsmokers



Data is estimated for the U.S. in 2012

RISK FACTORS FOR LUNG CANCER

- 1 SMOKING CIGARETTES**
increases risk 20 times
- 2 RADON**
a radioactive gas found in soil
- 3 ASBESTOS**
a toxic chemical
- 4 ENVIRONMENTAL TOBACCO EXPOSURE**
- 5 GENETICS**
in a first-degree relative
- 6 OTHER LUNG DISEASES**
- 7 PRIOR RADIATION**
in the chest area