

The Problem

- COPD is the 3rd leading cause of death
- COPD is under-diagnosed

CAPTURE COPD Study

The core of the educational initiative is the CAPTURE COPD Study which is a 5-year, NIH funded study aimed to train clinical teams to better diagnose and treat COPD as well as evaluate the effectiveness of a new tool designed to better identify those at risk for COPD. The education developed for interdisciplinary healthcare teams was accredited by National Jewish Health for CME/CNE credit and made publically available

Collaboration

All came together to address the national priority related to COPD and of The National Heart, Lung, and Blood Institute's COPD National Action Plan.

- **National Institutes of Health**
- **14 Principle Investigators** (representing 5 institutions)
- **5 Practice-based research networks (PBRNs)**
- **110 primary care clinics**
- **Interdisciplinary Healthcare Teams**
- **National Jewish Health**
- **AstraZeneca**

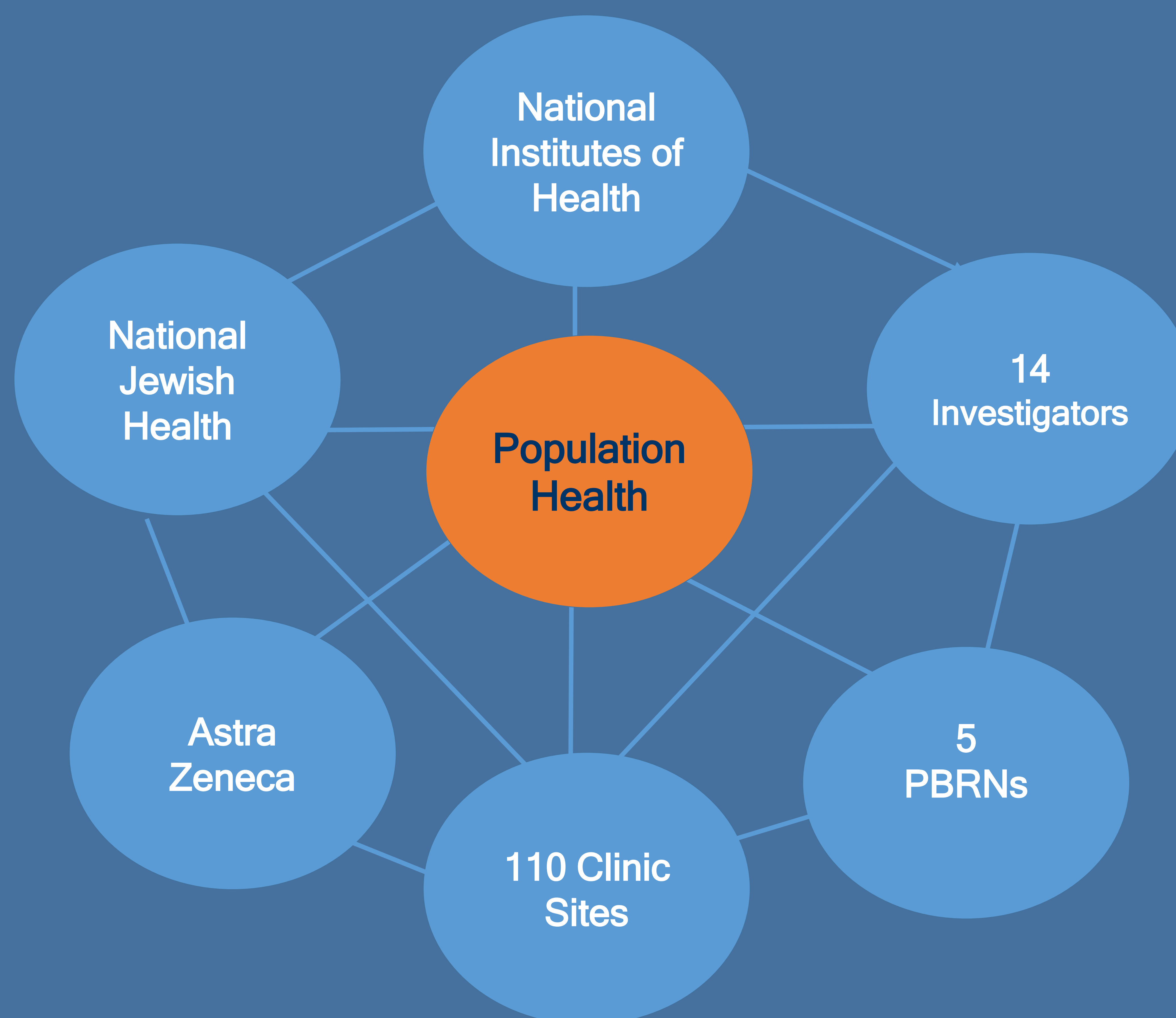
AstraZeneca provided an independent medical education grant to support and supplement the educational component of the NIH study allowing for more robust education to be developed and delivered to a larger audience.

It Takes a Village: Addressing National Priorities Related to COPD through Collaboration and Education

National Jewish Health, National Institutes of Health, AstraZeneca Pharmaceuticals, LP

Andrea Harshman, MHA, CHCP, CMP-HC, Lauren Rieck, Barry Make, MD, National Jewish Health;
Sue McGuinness, PhD, CMCP, AstraZeneca Pharmaceuticals, LP

The initiative illustrates that collaboration between and across varied organizations with education targeted to interdisciplinary healthcare teams can support larger research goals and impact population health related to COPD.



#1 in Respiratory Care

Methods

Required participation in live education sessions for CAPTURE study PBRN primary care practices featured team viewing of COPD 101: Basic Diagnosis and Management followed by a virtual discussion with study investigators. All clinic sites completed a pre-test to gauge baseline knowledge of COPD prior to the education and a post-test to assess learning and intent to change after the education. Four additional education modules were available as online enduring activities and made available to a national audience not associated with the CAPTURE COPD Study.

Program Impact

97% of live session participants reported that they are somewhat to extremely likely to make changes to their practice based on what they learned

This study showed that targeted COPD education improved knowledge and more importantly, intent to change practice by employing evidence-based recommendations to appropriately diagnose and manage patients with COPD.

This educational activity is supported by an independent educational grant from AstraZeneca Pharmaceuticals LP as a supplement to NIH grant 1R01HL136682-01. The content is solely the responsibilities of the authors and does not necessarily represent the official views of AstraZeneca, the NHLBI or the NIH.